



FURON®
Pure Performance

Furon® PV Series Pump

Air Operated, Fluoropolymer Bellows Pump

(30lpm/8gpm; 60lpm/16gpm)

Description

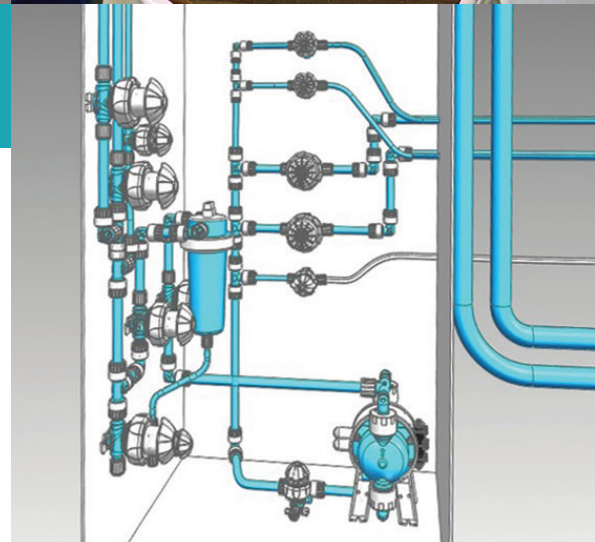
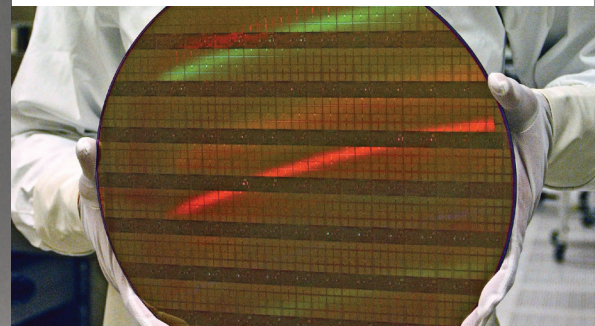
Furon PV Series Pumps are designed based on 20 years of experience in handling a great variety of chemistry used in the semiconductor industry.

Our pumps are constructed with no metal parts. All wetted parts are manufactured from PFA and PTFE suitable for pumping even most aggressive chemicals. The premium self priming capability of our product coupled with our plug & play driving system provide an easy installation & set up. Our innovative shuttle valve fixation technology allows us to provide three different driving systems to adapt our pump to exact customer requirements.

Furon PV Series bellows pumps come with a 24 month factory warranty. Upon completion of preventive maintenance (performed by a certified technician), the warranty is extended an additional two years up to a maximum of six years total warranty.

Applications

Furon PV Series bellows pumps offer the perfect solution for photovoltaic, chemical processing and drain applications in the semiconductor industry, or any industry where chemical resistance and maximum uptime is a must.



Features and Benefits

- Metal free pump
- O-Ring free flow path concept (tongue & groove concept)
- Self priming
- Fiber optic stroke sensor & leak detection system
- Low pulsation level with the use of Furon A2 Dampener technology
- Furon A2 Pumps have been tested for more than 130 millions cycles
- Warranty up to 6 years
- Flexible driving system
 - Single shuttle
 - External driving
 - Anti-stalling through twin shuttle system
- Flexible connection system compatible with all fitting types
- ATEX compliant

ASK AN ENGINEER


SAINT-GOBAIN

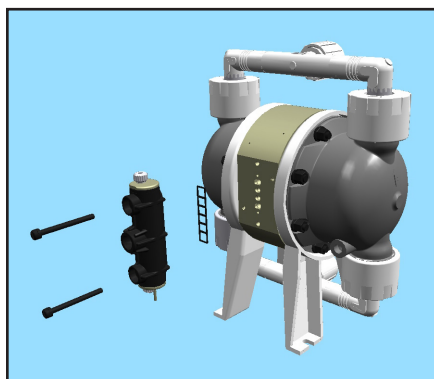
Specifications

Pump Size	Maximum Flow Rate	Maximum Suction Head	Maximum Air Pressure*	Maximum Back Pressure	Maximum Air Consumption*	Temperature Range**	Weight
2	8 gpm - 30 lpm	12 ft - 3.5m	80 psi - 6 bar	80 psi - 5.5 bar	6 SCFM - 9 m³/h	30 - 212° F 0 - 100° C	9 lbs - 4.5 kg
3	16 gpm - 60 lpm	14 ft - 4m	80 psi - 6 bar	80 psi - 5.5 bar	9 SCFM - 14 m³/h	30 - 212° F 0 - 100° C	16 lbs - 8 kg

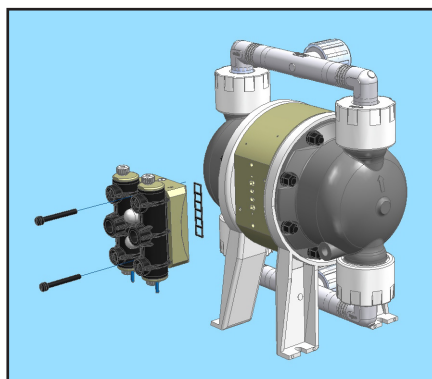
* [Please consult factory](#) for use with higher pressure

** [Please consult factory](#) for use with higher temperature

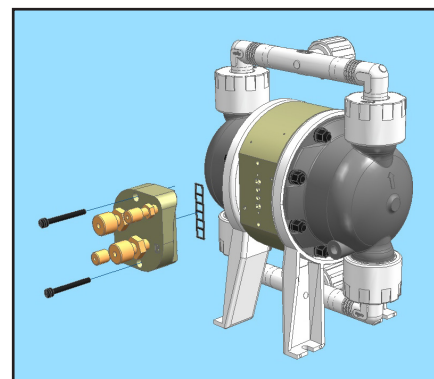
Tested for more than 130 millions cycles



Single shuttle valve driving system



Twin shuttle valve driving system
(anti stalling system)



External driving (allow a direct driving through a PLC system)

Ordering Information

Base Part Number	Pump Size	End Connection Type	End Connection Size	Driving System		
				Single Standard Driving Shuttle Valve	TWIN Shuttle Valve Driving System	External Driving
A2PV2 F12	2	FlareGrip 11"	3/4"	Nothing to add to the base Part Number	Add TWIN at the end of the base Part Number	Add EXT at the end of the base Part Number
A2PV2 T12		Tube End				
A2PV3 F16	3	FlareGrip 11"	1"			
A2PV3 T16		Tube End				

Options

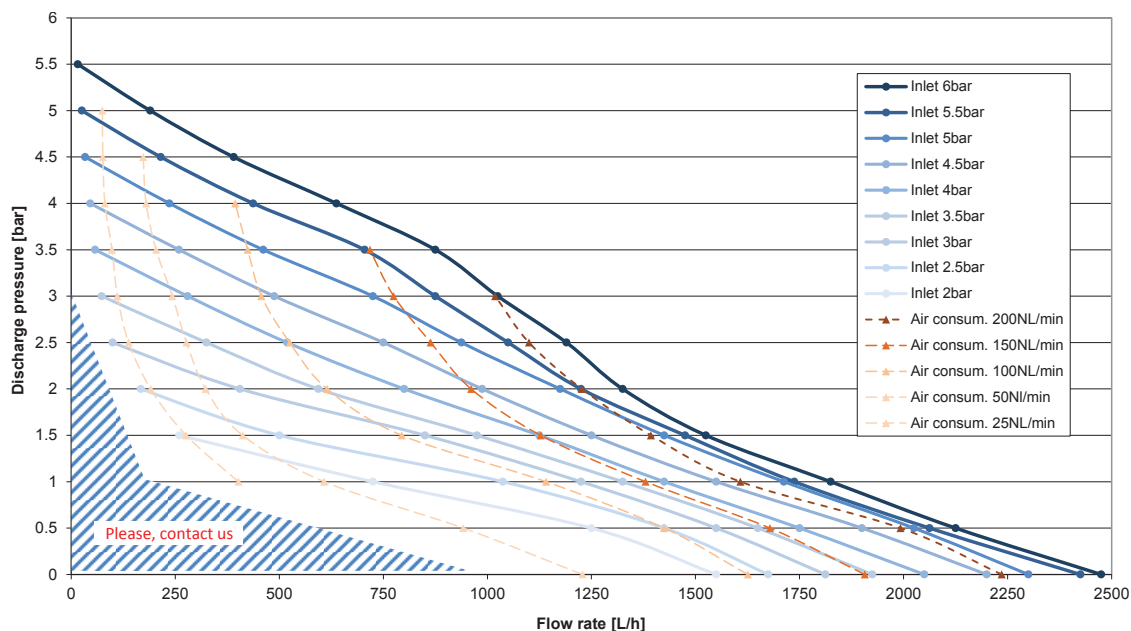
- Optic fiber for stroke counting (5m standard)
 - PN = 9475
- Fiber optic converter
 - PN = 8319
- Metal free leak detection system
 - LD1 for size 2 pump
 - LD2 for size 3 pump
- Other manifold orientations than the standard horizontal/horizontal
- Various combinations of end connections available (Flare, tube, pipe, NPT).

[Please consult our engineers](#) for details.

Flow Rate Curves

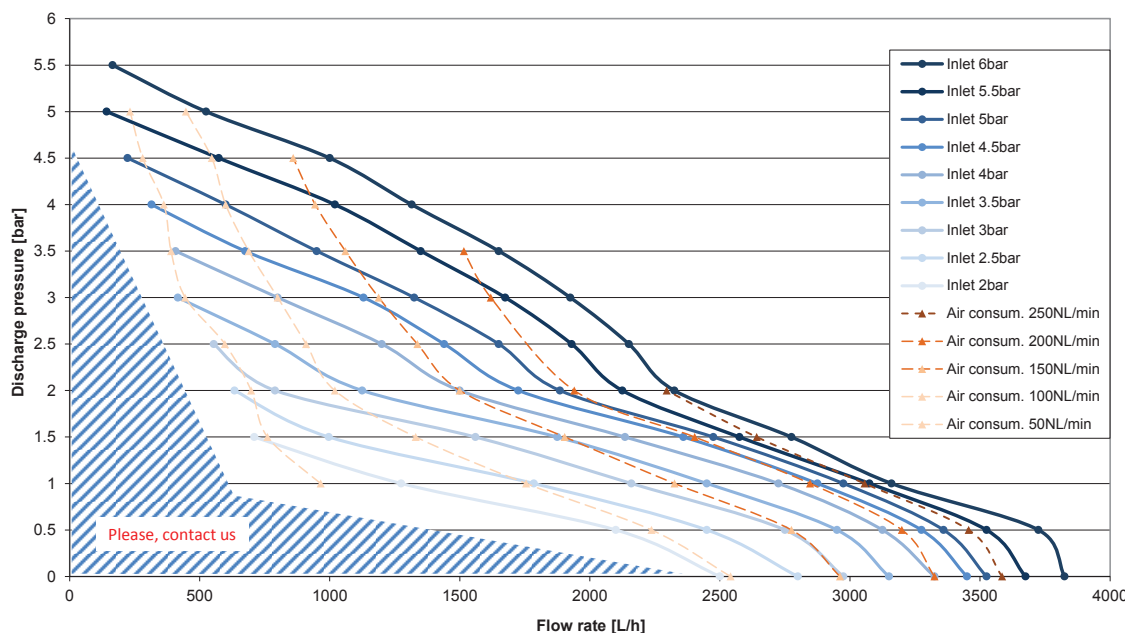
Pump Size 2

Inlet air pressure (bar) and air consumption (NL/min) as a function of fluid flow rate (L/h) and discharge pressure (bar)
Pump Size 2, Ø6x8 air pressure tube



Pump Size 3

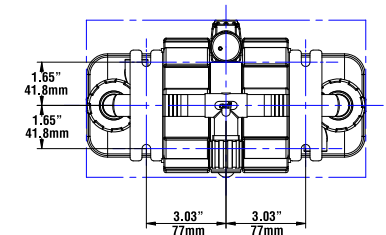
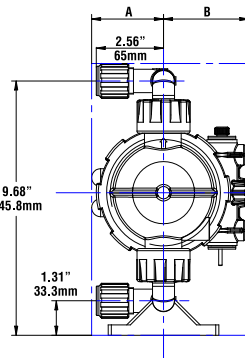
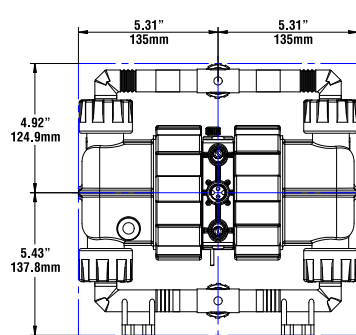
Inlet air pressure (bar) and air consumption (NL/min) as a function of fluid flow rate (L/h) and discharge pressure (bar)
Pump Size 3, Ø8x10 air pressure tube



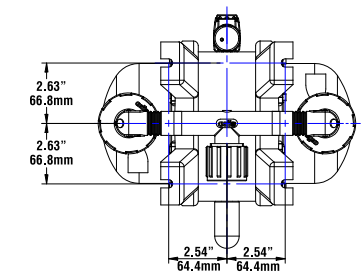
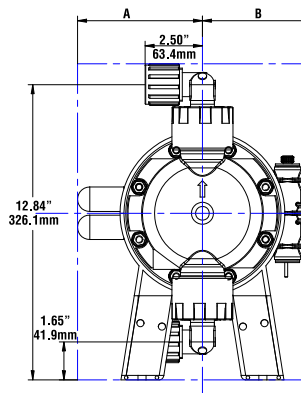
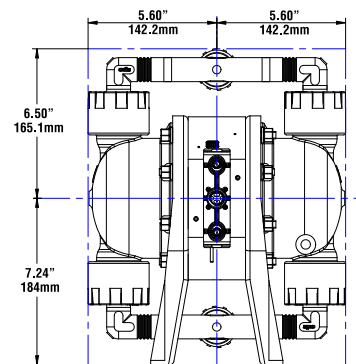
Dimensions

	Pump Size 2		Pump Size 3	
	Control Side	Muffler Side	Control Side	Muffler Side
	A	B	A	B
Single Shuttle	82.5 mm - 3.25"		120 mm - 4.72"	
Twin Shuttle	131 mm - 5.16"		148 mm - 5.84"	
External Shuttle	132 mm - 5.21"		148 mm - 5.84"	
Muffler Only		69.5 mm - 2.74"		138 mm - 5.43"
Muffler & Leak Detection System		95.5 mm - 3.72"		165 mm - 6.50"

Pump Size 2



Pump Size 3



Saint-Gobain Performance Plastics
 7301 Orangewood Avenue
 Garden Grove, CA 92841
 1-800-833-5661
 Tel: (714) 630-5818
 Fax: (714) 688-2614

Saint-Gobain Performance Plastics - France
 56, Chemin des Berthilliers
 71850 Charnay-lès-Mâcon, France
 Tel: (33) 3-85-20-27-00
 Fax: (33) 3-85-29-18-48

www.processsystems.saint-gobain.com

NOTE: The data and details given in this document are correct and up to date. This document is intended to provide information about the product and possible applications. This document is not the product specification and does not provide specific features, nor does it guarantee product performance in specific applications. Saint-Gobain cannot anticipate or control the conditions of the field and for this reason strongly recommends that practical tests are conducted to ensure that the product meets the requirements of a specific application.

Furon®, FlareGrip® and FuseBond™ are registered trademarks of Saint-Gobain Performance Plastics.

IMPORTANT: It is the user's responsibility to ensure the suitability and safety of Saint-Gobain Performance Plastics products for all intended uses and that the components to be used comply with all applicable regulatory requirements. Saint-Gobain Performance Plastics assumes no responsibility for any product failures that occur due to misuse arising out of the design, fabrication or application of the products into which they are incorporated.

WARRANTY: For a period of 24 months from the date of first sale, Saint-Gobain Performance Plastics warrants this product to be free of defects in materials and workmanship. The only obligation under any applicable product warranty will be to replace any portion proving defective, or at our option, to refund the purchase price thereof. THIS IS THE EXCLUSIVE WARRANTY AND IS EXPRESSLY IN LIEU OF ANY AND ALL OTHER OBLIGATIONS, GUARANTEES, WARRANTIES AND REPRESENTATIONS. SAINT-GOBAIN PERFORMANCE PLASTICS DISCLAIMS ALL IMPLIED WARRANTIES OF MERCHANTABILITY AND FITNESS FOR A PARTICULAR PURPOSE.