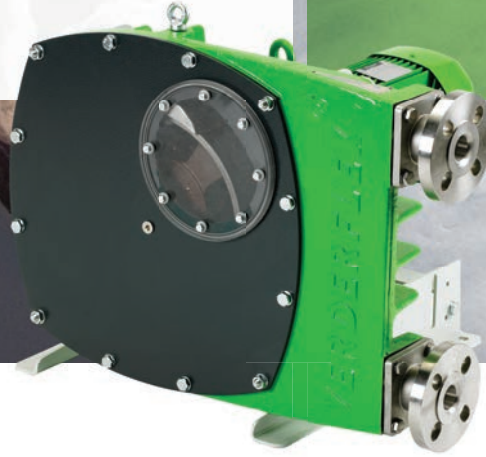


VERDERFLEX VF

For powerful heavy duty applications



The Verderflex VF range of industrial hose pumps are a proven, medium to high flow, high pressure, heavy duty abrasion resistant family of peristaltic pumps. They can pump high solid content (up to 80%) and high s.g. slurries (up to 2.0), reducing water usage and improving process efficiencies. These field proven VF pumps offer reliable solutions in difficult pumping situations worldwide. Replacement VF hoses typically cost just around 10% of the initial pump price - the long life hose is rapidly changed without removing the pump to a workshop, saving time, money and frustration.

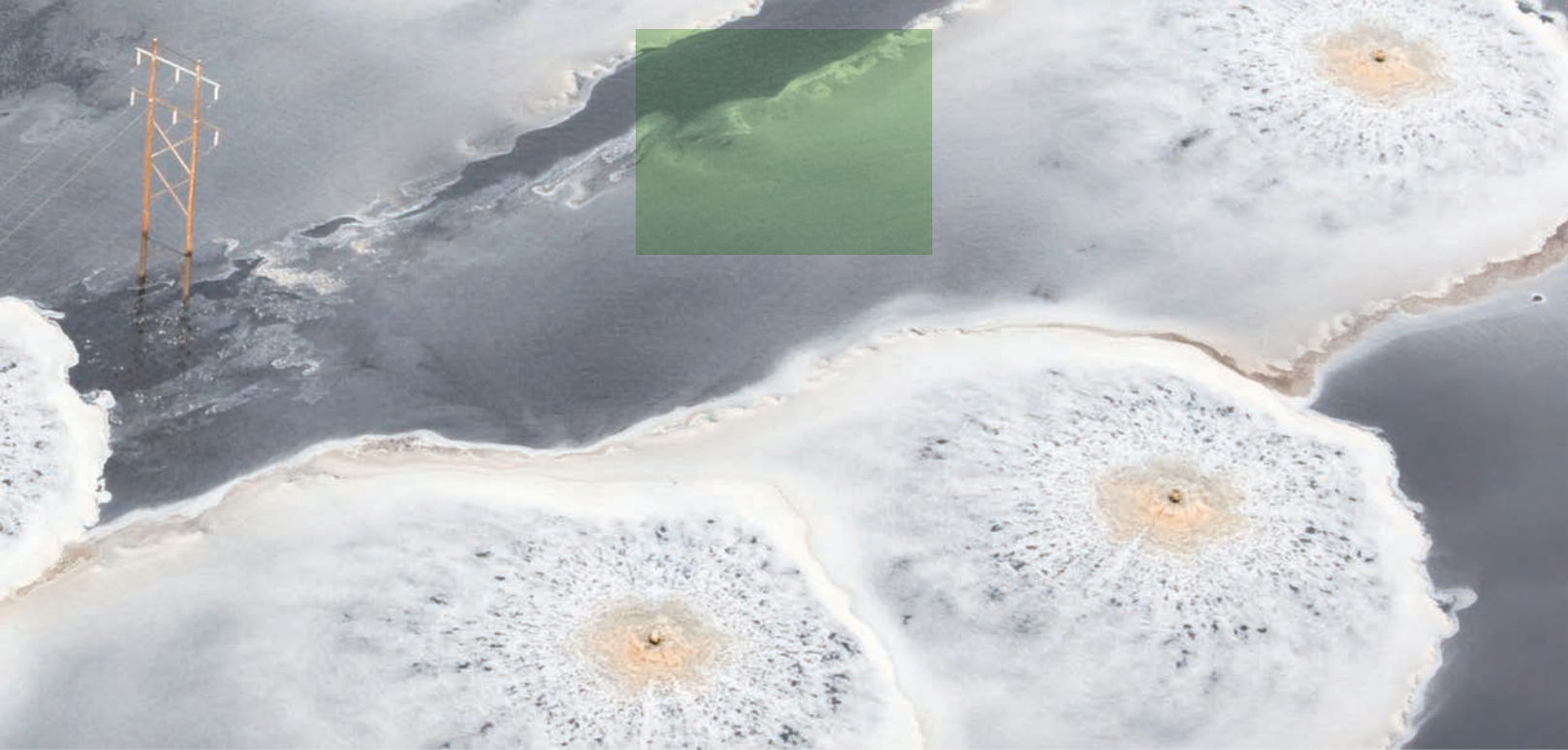
Features of the Verderflex VF hose pumps

- Flow rates up to 90 m³/h
- Rigid pump housing design for heat dissipation and strength
- Fit-in hoses; no adjustment needed
- Reduced downtime
- Minimise maintenance costs

Technical details

Flow rate	Max. 90 m ³ /h	Dry Suction Lift	Max. 9.5 mwc
Discharge pressure	Max. 16 bar	Options	ATEX





Rotors and Rotor Shoes

Precise alignment between system pressures and hose life

Every Verderflex VF pump has 2 diametrically opposed rotor shoes, normally precision cast Aluminium, fitted on their robust cast iron rotor. These large radius of curvature shoes provide a gentle, gradual transition between full hose occlusion and total hose relaxation, minimising the hose's re-reinforcement fibre stress and helping maximise hose life unlike the harsh transition of small radius roller designs.

Each rotor shoe's compression and the associated hose occlusion can be custom configured using shims to closely match the hose's compression with the pump's operating pressure optimising the trade off between hose compression and hose life. This simple combination readily withstands the ingress of pumped product on a hose burst unlike the complex bearing and seal arrangements used by roller assemblies.

Options

- ATEX versions
- Hose burst monitoring
- Hose connections for VF15
- Hydraulic motors
- Optional hygienic connections to standards including Tri-clamp and Dairy
- Pulsation dampers
- Screw on sherardized (vapour galvanised) mating flanges for the VF100 and VF125
- Special coatings for corrosion protection
- Stainless steel Rotor shoes, base frame and fasteners
- Vacuum installations to increase the suction power

